



## **How to import Datavideo HDR-60 and HDR-70 .MXF files on PC using: Adobe Premiere Pro CS6**



Datavideo's HDR-60 and HDR-70 recorders are hard drive based video recorders with removable hard drive enclosure, designed for studio desktop applications. Once you have completed your recording, simply eject the hard drive enclosure and use USB 2.0 to connect to a PC based NLE system. The USB port provides power to the unit. It's perfect for use with laptops in the field.

### **The HDR-60/70 recorders record in .MXF or .MOV files.**

For Adobe Premiere CS4 through CS6 on PC: Only **.MXF** files are supported natively. It is not recommended to use .MOV. You will need a third party conversion software to use this format.

VLC Media Player is an easy and free way to play and log clips before you bring them into your NLE software.

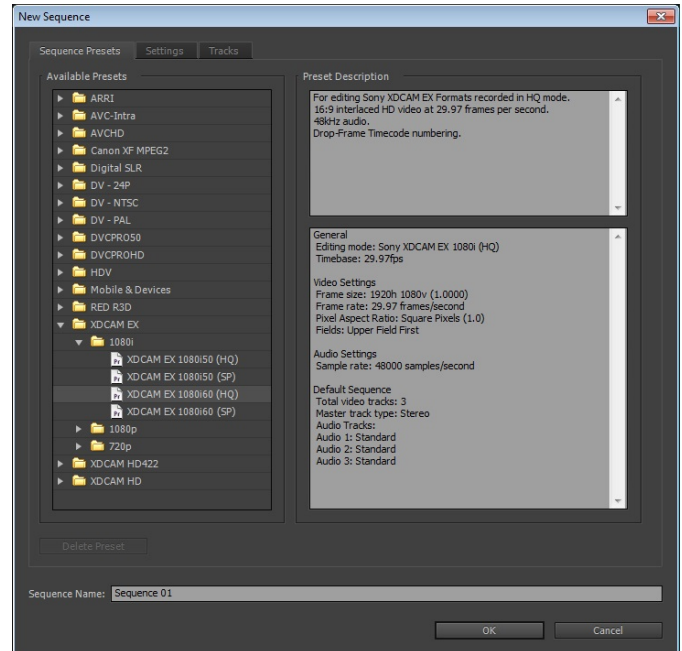
VLC is free! Go to: <http://vlc-media-player.en.softonic.com/>

Now, Let's get started with our guide on how to import the HDR-60/70 files into Adobe Premiere Pro CS6!

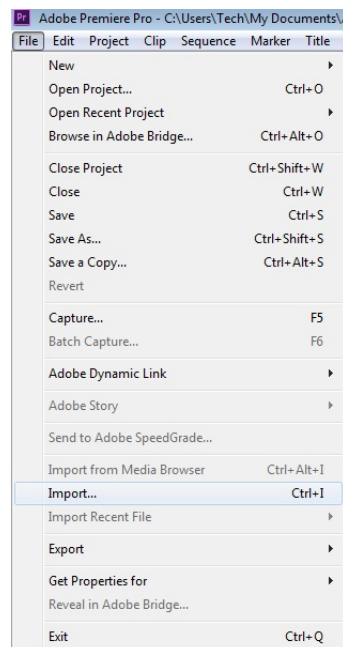
### **How to import **.MXF** into Adobe Premiere CS6 for PC**

1. Open Adobe Premiere and start a new project. Name your project and click 'OK'. Choose a sequence setting that works best with your workflow that is in the resolution and the frame rate you recorded.

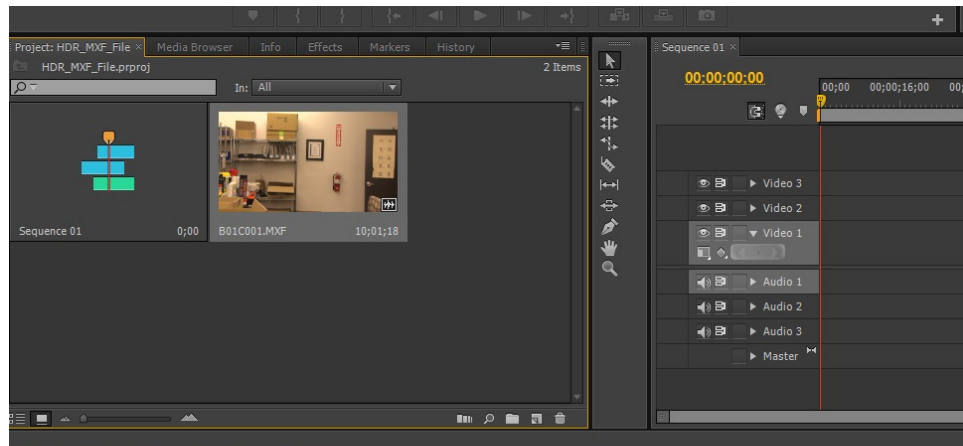
2. If you do not know where to start, select Sony XDCAM EX as a sequence preset, which is a good starting point. You can click on the 'settings' tab, to customize your sequence presets. When you make your selection, click 'OK' in the bottom right.



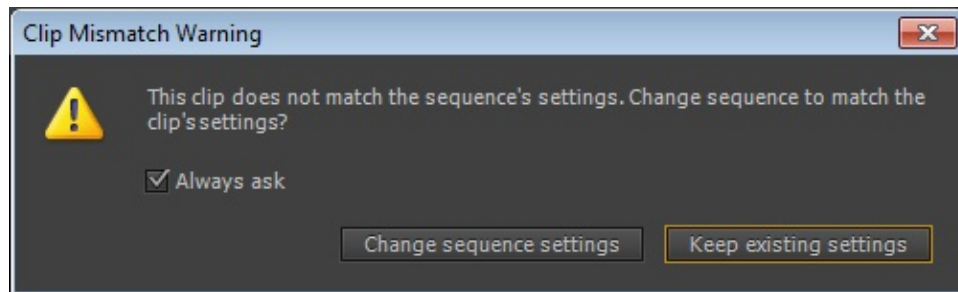
3. Go to 'File' in the top left, and select 'Import.' Choose your .MXF file(s) in the file directory and click import.  
-You do not need to click on the '.XMP.' files, but they must be in the same folder.



4. In the project window you will see your .MXF file. Drag it into your sequence.



5. You have 2 options:  
'Change sequence settings' or 'Keep existing settings.'  
Changing your sequence settings will change them to the native properties of the .MOV file, which is an XDCAM HD Movie.



6. After you make your selection, your .MOV clip will appear in your sequence. You can now add more clips and are ready to begin editing your .MXF files!

\*Currently, **.MOV** is not supported natively in Premiere CS6 for PC, and you need a third party conversion software to use this format. It is recommended you always record in **.MXF** if you are editing on Adobe Premiere CS6 for PC.