

21.5-inch Waveform HDSDI & HDMI Studio LCD Monitor

S-1222F

Features:

- ◆ Full HD 1920×1080, H178°/V178° , 1000:1 Contrast
- ◆ HD/SD-SDI, HDMI, CVBS multi formats input and loop output
- ◆ HDMI converted to SDI output
- ◆ 16-ch SDI embedded audio meter / 8-ch HDMI audio meter display
- ◆ TSL 3.1/4.0 UMD and Text-TALLY display
- ◆ Waveform / Vector scope / Histogram / Focus assist / Timecode / False color / Blue only / Zebra
- ◆ Magnetic LCD protective glass
- ◆ V-mount / Anton Bauer plate, main/backup DC in



Introduction:

The S-1222F is a 21.5-inch HDSDI/HDMI studio LCD monitor, with a Full HD resolution 1920 ×1080 panel. It integrates a wide range of professional functions including waveform, vector scope, RGB histogram, red/blue switchable peaking, focus assist, false color, blue only, zebra, rotate and flip, 16-ch HDSDI audio meter, time code, and internal color bars.

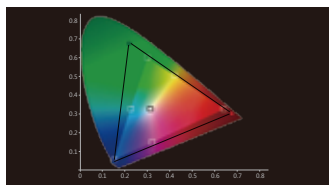
S-1222F supports UMD and Text-TALLY display under TSL 3.1/4.0 protocol.

The monitor accepts 2 HD/SD-SDI, 1 HDMI and 1 Composite video, and has 2 HD/SD-SDI loop through outputs, 1 HDMI loop through output, and 1 HDMI converted to SDI output.

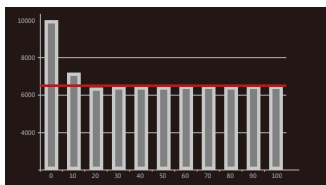
It is powered via a 4-pin XLR 11-17V DC connector or V-mount / Gold-mount battery mounts.

Color Reproduction

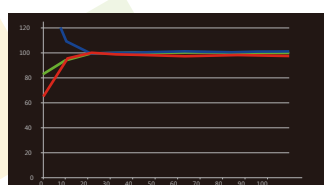
The S-1222F adopts high quality LCD panels and offers accurate color reproduction. The color calibration has been optimized in the new firmware, and users can adjust color temperature by RGB Gain and Bias.



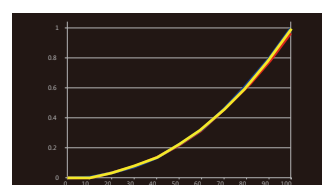
Color Gamut



Color Temperature



RGB Balance



Gamma Luminance

Specifications:

LCD Performance

Size	21.5 inches
Resolution	1920×1080
Display area	477×268 mm
Aspect ratio	16:9/4:3 adjustable
Color system	NTSC/PAL
Brightness	250cd/m2
Contrast	1000:1
Color	16.77 million colors
Viewing angle	H/V:178/178

Input and Output

Input	2 BNC	(2) HD/SD-SDI in
	1 BNC	(1) Composite in
	1 HDMI	(1) HDMI in
Output	2 BNC	(2) HD/SD-SDI loop through out
	1 BNC	(1) HDMI converted to SDI output
	1 HDMI	(1) HDMI loop through output

Video Format

SDI	SMPTE-274M	1080i (60 / 59.94 / 50)
		1080p (30 / 29.97 / 25 / 24 / 23.98)
	SMPTE-RP211	1080psf (30 / 29.97 / 25 / 24 / 23.98)
	SMPTE-296M	720p (60 / 59.94 / 50)
	SMPTE-125M	480i (59.94)
HDMI	ITU-R BT.656	576i (50)
	HDMI	480i / 576i / 480P / 576P
		1080i (60 / 59.94 / 50)
		720p (60 / 59.94 / 50)
Composite	1080p (60 / 59.94 / 50 / 30 / 29.97 / 25 / 24 / 23.98)	
Composite	PAL/NTSC	

General

Working voltage	DC / battery 11V-17V
Power consumption	≤ 45W
Working temperature	0 °C ~ +40 °C
Working humidity	10% ~ 90%
Storage temperature	-15 °C ~ +60 °C
Storage humidity	10% ~ 90%
Dimensions	525×381×135 mm
Net weight	6.87kg

SWIT Electronics Co., Ltd.

Website: www.swit.cc
 Email: contact@swit.cc
 Tel: +86 25 85805753
 Fax: +86 25 85805296

Distributed by: